

WILD HORSES

FOUR WHEEL DRIVE

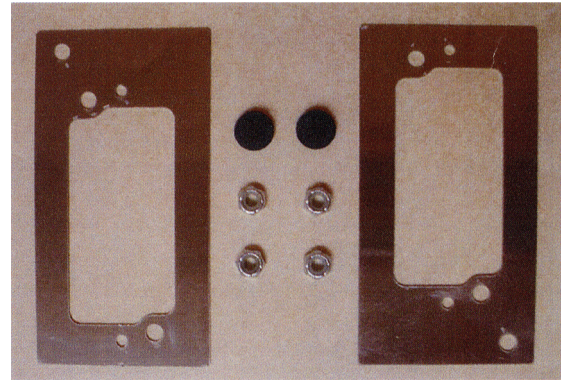
Phone (209) 400-7200 Fax (209) 943-7923 www.wildhorses4x4.com

Turn Signal Conversion

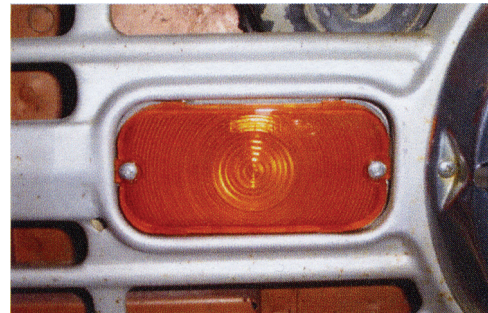
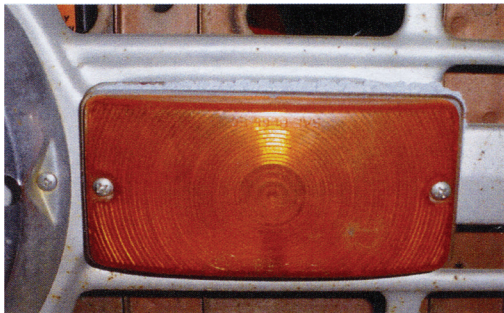
#9411 Date 10/30/07

Parts list:

- 2 stainless steel adapter plates**
- 4 1/4-20 nylon insert loc nuts**
- 2 plastic ratchet fasteners**
- (Honest, that's what they're called)**



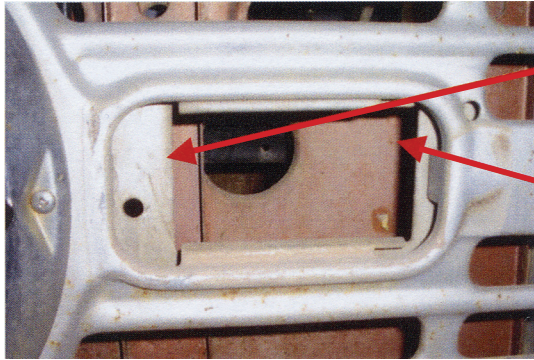
Many people prefer the look of the 66-68 Bronco turn signals over the 69-77 style. This turn signal conversion will allow you to mount the 66-68 turn signals in 69-77 Broncos with minimal modification to your grille. In fact, there is nothing done that would prevent you from converting back to the original turn signals at a later date if that was ever desired by you or a future owner.



Remove Original Turn Signals

- 1) Disconnect electrical plug with two wires.
- 2) Remove ground bolt to disconnect ground wire from turn signal.
- 3) Reinstall ground bolt without ground wire from turn signal.
- 4) Remove two nuts from behind grille where turn signal studs penetrate through grill.
- 5) Remove turn signal assembly.

Your grille should now look like this:



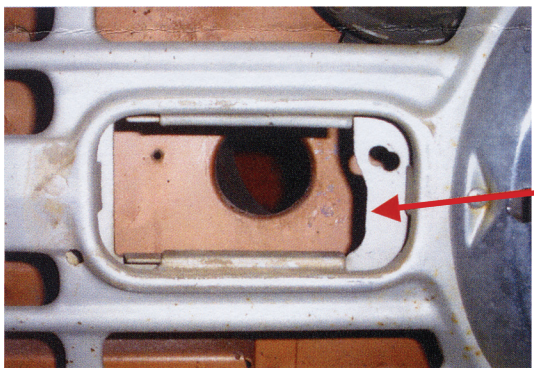
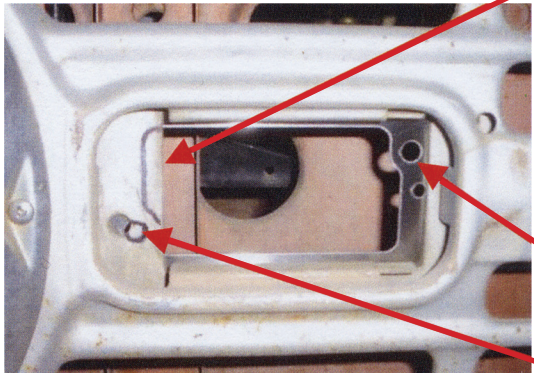
If you try to fit the early turn signal into this Opening, it won't fit because of interference here.

In addition, there is no material here to drill a hole to mount the early turn signal.

You will solve the first problem by removing material with a file or dremel tool. Mark the area to be removed and then use your choice of tool to remove the material. Temporarily holding the adapter plate in place may help you see what needs to be relieved. You can also keep trying to fit the new signal in and see where it's hitting.

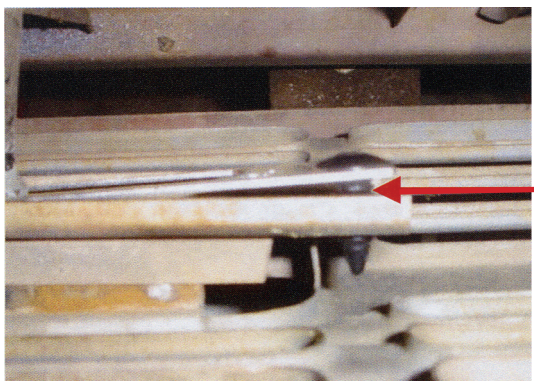
You can see how the adapter plate provides a mounting hole where there was previously just open space.

Note the hole marked next to the existing hole. The existing hole will need to be egged out to incorporate the new hole location.

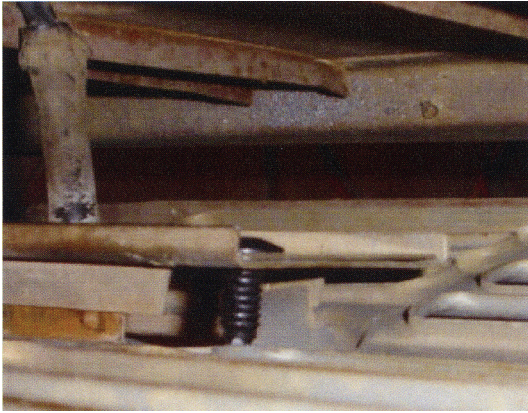


Here is a shot of the driver's side after the offending area has been removed.

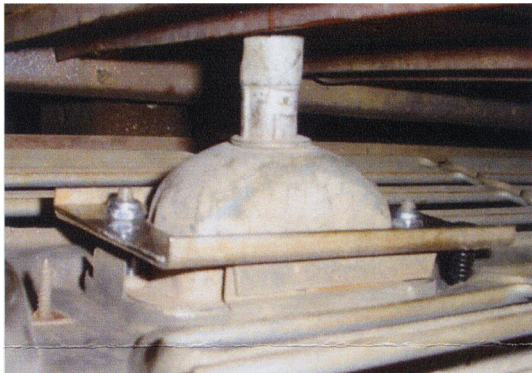
Do a fit check with the new early turn signal bucket to make sure there is enough clearance.



Now go ahead and put the adapter plate in place behind the grille. The turn signal will hold it in place once the installation is done, but a plastic ratchet fastener has been provided to hold it in place if you care to use it. This picture shows the plastic fastener only pushed part way in.



The plastic fastener is now fully installed and you are ready to mount the new turn signal.



Use the nuts that are supplied with the adapter to mount your early turn signals. The nuts will not ping up against solid metal so don't let yourself over tighten them. When the turn signal gets snug stop tightening the nuts.

Connect the two-wire plug to the plug where you disconnected the original turn signal. The 66-68 early turn signal does not come with a ground wire because they relied on the turn signal bucket being grounded to the grille by the way it is mounted. Our conversion has worked fine without a ground wire. If for some reason your turn signal becomes intermittent, you may need to add a ground wire between one of the 1/4-20 mounting locations, and the ground bolt where the original turn signal ground wire was grounded.

